



4th International Hawa Student Award 2017

More than a roof over one's head

The Hawa Student Award 2017 focuses on one of the most pressing issues of our time – providing people with affordable living space. Global metropolises are booming and experiencing enormous growth as a result. Ever more city-dwellers are no longer financially able to afford perpetually rising rental costs: the social gap continues to widen.

In addition to political efforts to subsidise housing construction, it is the construction industry that must heed the call to create cost-effective living space for a wide range of user groups through innovative ideas and concepts as well as future-oriented technologies and processes. Hawa wants to contribute today towards sensitising the architects of tomorrow to social issues.

Creative ideas wanted for emergency apartments

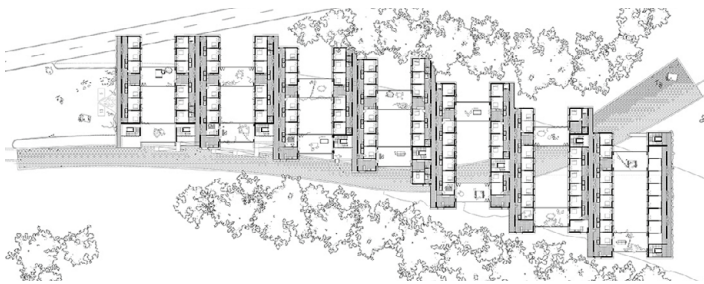
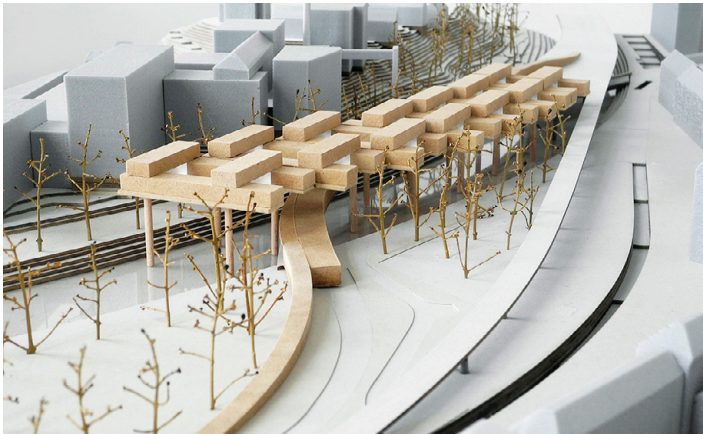
The competition was about developing a trendsetting living concept for a real plot of land in Zurich. Its objective: to find an architecturally high-quality solution that, despite budget limitations, would make a lasting contribution to building culture.



1st Prize

Project «TUTAJWied»

Julia Modlinska, Berlin University of the Arts



With an orthogonal building development grid and enclosure of the motorway exit, this project transforms a barren zone on a dead-end road into a well-habitable place. Forming the basis of the grid are eight large rectangular concrete platforms. Oriented at right angles to the flow of the river Sihl, they are supported on pillars driven into the river bed. Resting on the platforms are single-storey residential buildings of prefabricated timber construction, stacked perpendicular on two levels. Each of the residential buildings is bisected lengthways by a centrally arranged corridor, thus creating different spatial layers. These can be flexibly combined, making them not only responsive to rapidly changing living needs, but also allowing for permanent residential use.

Jury assessment

The project is both very mature and convincing for a variety of reasons: for example, the enclosure of the motorway exit and the arrangement of the floor plan to permit a great deal of flexibility. Attention to design and quality of urban space are important contributors to the renewal of this currently inhospitable place. The deliberate decision to exceed the envisaged planning perimeter is both courageous and legitimate in view of the result.

2nd Prizes ex aequo



Project «Dwelling Palace»

Maren Kröller and
Raphaella Buchberger

State Academy of Fine Arts
Stuttgart

A coarse concrete structure that can be filled with modules appealed to the jury due to its diversity of use. The proposal to combine all public spaces on one level, clearly distinct from the living areas, is fascinating.



Project «9062501»

Christina Cernovsky and
Franziska Faber

Leibniz University of Hannover

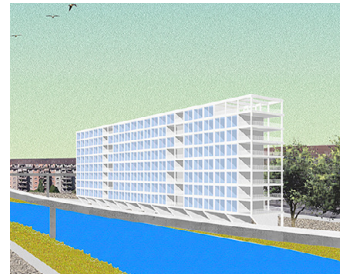
The proposal to accommodate emergency apartments in a high-rise building is brave and, in urban development terms, clearly terminates the stub of motorway. The choice of a high-rise building within the remit of the competition is both an interesting and provocative approach.

Final round



Project «Wohnen mit Sihl»

Clemens Wiese and
Eljas Allafian
Brunswick University
of Technology



Project «Sihlwohnen 1.0»

Alina Krimpenfort and
Franziska Roehse
Leibniz University of Hannover



Project «Rock an Roll (6623630)»

Dilara Orujzade and
Lukas Schwabenbauer
Technical University of Munich



Project «Wohnen auf Zeit über der Sihl»

Johanna Leyh and
Lorenz Wittkugel
Leibniz University of Hannover



Project «Dreh- und Angelpunkt»

Anja Widderich
Brunswick University
of Technology



Project «19961987»

Michael Sattler and
Leon Frederik Scheufler
Technical University of Graz



Project «MANASTIR»

Arianit Ramiqi and
Mauro Manco
ETH Zurich

Jury

Prof. Marianne Burkhalter, Università della Svizzera italiana Mendrisio
Prof. Hans Gangoly, Technical University of Graz
Prof. Hermann Kaufmann, Technical University of Munich
Prof. Hubert Klumpner, ETH Zurich
Prof. Meinrad Morger, Technical University of Darmstadt
Prof. András Pálffy, Vienna University of Technology
Heinz Haab, Commercial CEO, Hawa Sliding Solutions AG
Anke Deutschenbaur, Team Leader Slide Studio, Hawa Sliding Solutions AG

Jury decision

The eight jurors assessed 39 projects. The question repeatedly asked was, what is the appropriate architecture for people in need. Awards went to a high-rise building directly abutting the bridge stub (2nd place ex aequo – CHF 3500), a dark cube standing in the Sihl (2nd place ex aequo – CHF 3500) and a reticular residential structure floating above the river on stilts (1st place – CHF 5000).

Award ceremony



March 9 was a happy day at ETH Zurich. The winners of the Hawa Student Award 2017 received their prizes from jury president Marianne Burkhalter and Hawa CEO Heinz Haab at a festive event.

New thinking for new spaces

The Hawa Student Award 2017 lends opportunity for aspiring architects from Switzerland, Germany and Austria to develop new and unconventional solutions for temporary housing. Sought here were flexible spatial structures for people with little or no income and temporarily dependent on publicly provided emergency apartments. One key to flexible utilisation is smart sliding solutions of the kind that Hawa AG and ECU AG have been developing and producing for decades.

The two successful Swiss family-owned businesses merged in 2017 to form Hawa Sliding Solutions AG. For the new company as well, dialogue and encouragement for the future generation of planners continues to be of great importance.



Hawa Sliding Solutions AG
Untere Fischbachstrasse 4
8932 Mettmenstetten
Switzerland
www.hawa.com